



FASTRIP ISP

Copyright ALIT Technologies - 2022

FASTRIP ISP

FASTRIP ISP is the complete system for the **in-line chemical stripping of hooks installed on overhead conveyors of powder coating lines.**

Thanks to FASTRIP ISP, it is possible to **in-line paint stripping hooks**, and in some cases frames, **without removing them from the chain**

The hooks to be stripped are always hanged on to the overhead conveyor, but they are partially immersed in the paint stripping tank during their passage. The immersion stage lasts 3 minutes, a suitable time to completely remove the layer of powder paint



FASTRIP ISP

With **FASTRIP ISP** the hooks remain always hang on the conveyor. In the coating plant, after the position of unloading area, the hooks flow through the **FASTRIP ISP** tank, and when they exit from the tank they are completely paint strip.



The hooks are constantly and cyclically paint stripped

Reduction of the manual labor otherwise required to replace the painted hooks



Reduction of paint defects



No more operators that remove the painted hooks and re-install on the conveyor the clean ones



Higher quality



FASTRIP ISP

COST BENEFITS

Reduction of the manual labor otherwise required to replace the painted hooks



No more operators that remove the painted hooks and re-install on the conveyor the clean ones

The economic benefits of **labour reduction** - which cyclically removes coated hooks and repositions the stripped ones - are immediately clear and intuitive



THE COST BENEFITS OF FASTRIP ISP

FASTRIP ISP allows to have **clean hooks** at the begin of **every paint cycle**



Clean hooks



Perfect electric contact



Painted hooks



Bad electric contact



WITHOUT FASTRIP ISP



if the electric contact is **bad**



80-110 μm
orange peel effect

60-80 μm
perfect quality

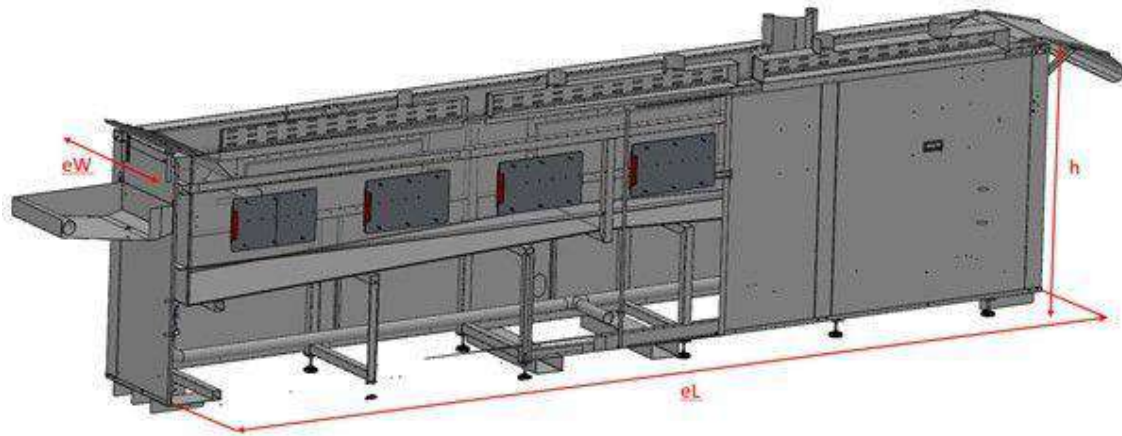
If the hooks are painted (**bad electric contact**) they become less conductive: it is therefore possible to observe, for the lighter aluminium profiles a difference of paint thickness up to **20 μm** between the ends of the profile



Quality problems
and
Waste of powder coating



FASTRIP ISP: PAINT STRIPPING TANK



- ✓ Length from 4.5m up to 13.0m (3-minute contact time)
 - ✓ AISI 304
 - ✓ Electric heating plates
 - ✓ Ultrasonic transducers
 - ✓ Thermal insulation
- ✓ Connect to the paint stripper filtration plant (series **FASTRIP FP**)



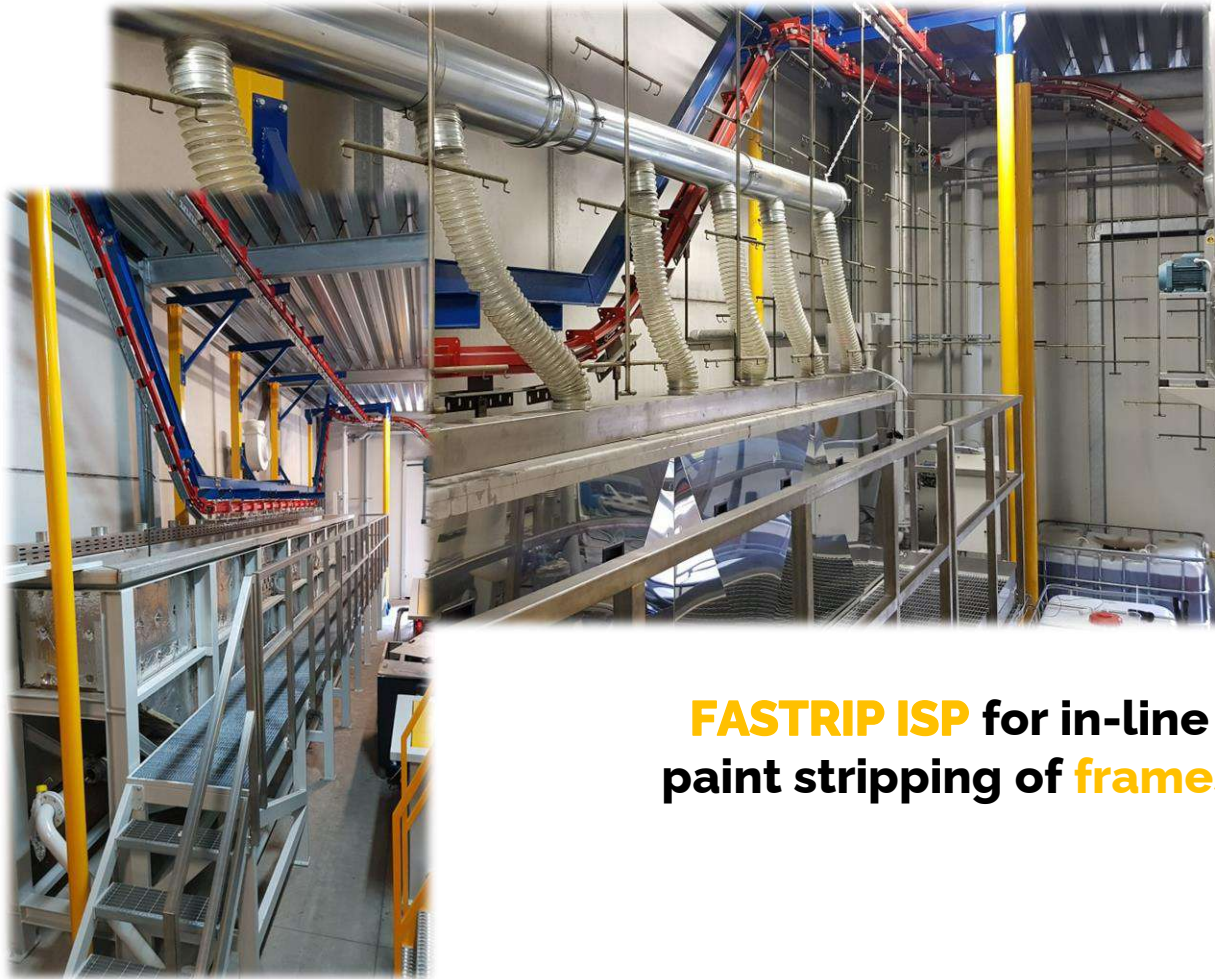
FASTRIP ISP: EXAMPLES OF CONFIGURATIONS



For aluminium vertical powder coating plants



FASTRIP ISP: EXAMPLES OF CONFIGURATIONS



FASTRIP ISP for in-line paint stripping of **frames**



FASTRIP ISP: PAINT STRIPPING TANK

FASTRIP ISP Paint stripping tank

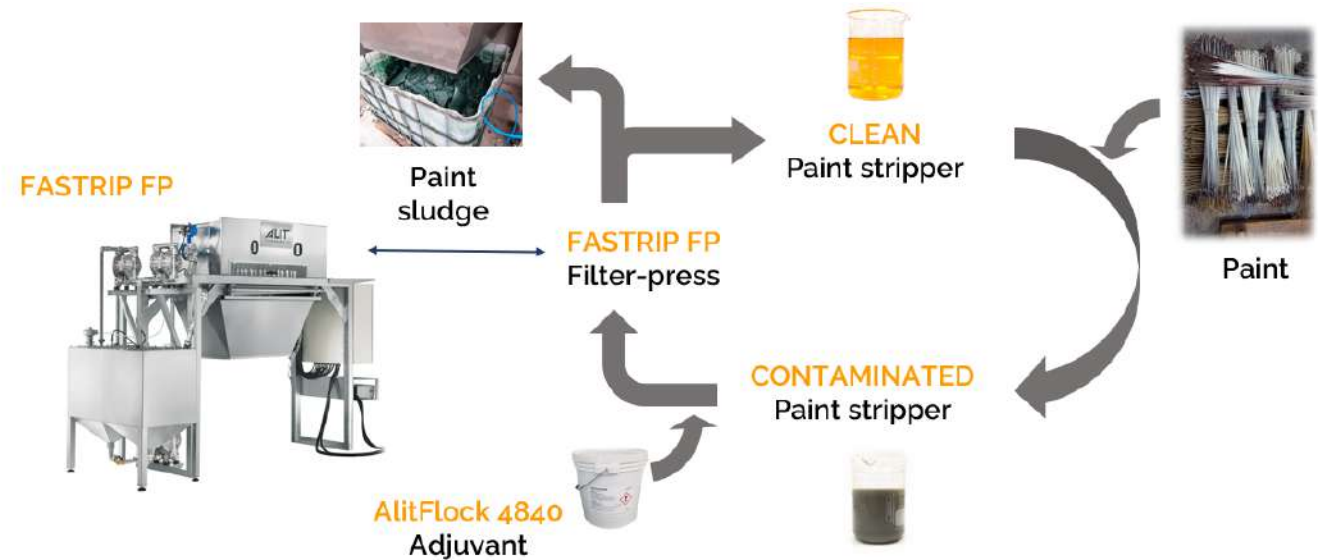


Modular design e several customization option



FASTRIP ISP: FILTRATION WITH FASTRIP FP

ALIT Technologies supplies **FASTRIP FP** complete systems for the filtration of paint strippers on both a small and large scale. All these plants can be engineered according to individual requirements



FASTRIP FP – FILTER PRESS

FASTRIP FP is the filtration system developed by ALIT Technologies. If you want to find out more about the filtration process, we deepened this topic in the issue n.2 of ALIT Academy Magazine:

<https://www.alit-tech.com/alit-academy-magazine-en/n-2-march-2022>



FASTRIP ISP – METALSTRIP PAINT STRIPPERS

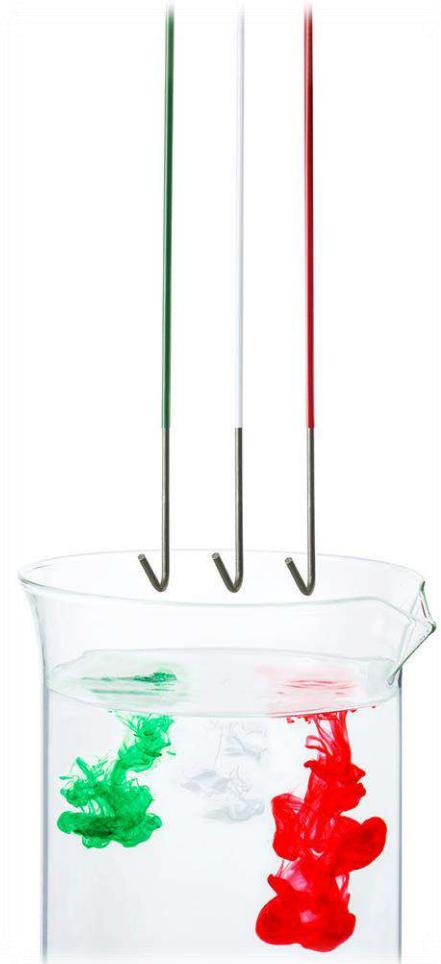


The strong chemical background of ALIT Technologies has allowed the company, in recent years, to become a benchmark in the market for the production of **paint strippers for metal surfaces**

ALIT Technologies produces and supplies a complete portfolio of chemicals: the **METALSTRIP 14xx series**, which are specifically developed for Fastrip ISP plant



FASTRIP ISP – METALSTRIP PAINT STRIPPERS



METALSTRIP 14XX series: these paint strippers are used for filling the **FASTRIP ISP** tank. Their use is normally intended for the start-up of the plant

METALSTRIP AKTIVATOR 16XX series: this paint strippers' series is regularly used to supply the **FASTRIP ISP** tank during its normal operating cycle. The product will be added periodically into the bath to optimally restore the chemical parameters of the bath. The quantities to be added are determined through a simple chemical analysis of the stripping bath

METALSTRIP COVER LAYER series: it is a non-toxic solution that forms a floating layer of about 4 cm above the paint stripper. This solution reduces heat loss, odour emissions and protects the paint stripper from contact with air



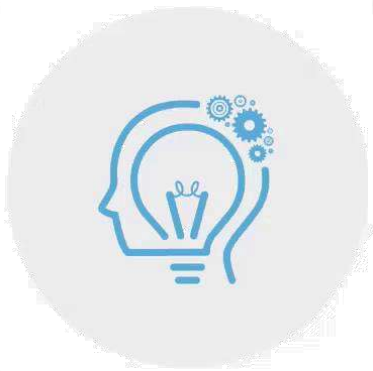
WHAT CAN ALIT DO FOR YOU?



Perform Lab Test



Provide a comprehensive report both
chemical and plant engineering



Offer complete solutions



FASTRIP ISP: WORLDWIDE DISTRIBUTION



Nowadays, The **FASTRIP ISP** installations, are more than 60 spread worldwide



Some testimonials are available on the Press coverage section of our website: www.alit-tech.com





Thanks for your attention!